

5 Warranty

In addition to the seller's warranty obligations arising from the contract to purchase, we as the manufacturers provide a warranty of 24 months from purchase of the appliance so as long as the appliance has been used properly and the operating instructions have been followed. Evidence of the date of purchase and the type of appliance should be provided by means of a receipt. The purchaser's statutory rights are unaffected by this manufacturer warranty. During the warranty period, we undertake to remedy any defects attributable to poor materials or workmanship. This does not include damage that is attributable to normal wear and tear, improper use and insufficient or incorrect maintenance.

6. Repair notes

The appliance should never be opened by anyone other than properly trained and certified personnel within MAM Baby. Otherwise the warranty will be invalidated. Improper repairs or tampering can result in significant safety hazards for users. If the supply cord is damaged, it must be replaced by the manufacturer, its service agent or similarly qualified persons in order to avoid a hazard.

7. Technical data

Voltage: 220–240 V; 50–60 Hz / Power consumption: 1000–1200 Watts. The product is fitted with a CEE 7/7 mains plug.

8. Safety notes

1. Children must never play with the appliance.
2. Children should never use this appliance, even under supervision.
3. This appliance cannot be used by children because children do not understand the risks involved. Cleaning and maintenance must never be carried out by children. Keep the appliance and cord out of reach of children.
4. The appliance may be used by people with reduced physical, sensory or mental capabilities or lack of experience and knowledge, provided that they have been given supervision or instruction concerning the safe use of the appliance in a safe way and understand the hazards involved.
5. This appliance is intended for household use only.
6. Food should not be heated for too long.
7. Without regular descaling, sterilising or bottle & food warming cannot be guaranteed.
8. Please do not put other appliances into the Steriliser.

G120-5X190A

8. Prior to using the appliance for the first time, be sure to remove all packaging material and any components not used, to ensure that your child cannot injure him or herself or swallow anything.
10. The food should not be heated for too long and its temperature should be checked on a sensitive part of your skin before serving the baby.
11. To avoid potential injury, only use this appliance for its intended use.
12. Caution: the heating element surface is hot during operation and remains hot for a while after use.
13. Only connect appliance to voltages in accordance with the rating plate on the base of the appliance.
14. Do not use the appliance within the reach of children. Secure the power cord and make sure that it cannot be pulled by a child, causing the appliance to fall onto the floor.
15. To operate the appliance, it must be placed on a dry and level surface.
16. Always use a sufficient quantity of water for warming.
17. Never fill the appliance with water up to the top edge.
18. Never operate the appliance without water or carry it during operation. When the appliance is not in use, always disconnect the mains plug and empty out the water.
19. SCALDING RISK: the water inside the Steriliser or Bottle & Food Warmer can get extremely hot.
20. Check the Steriliser or Bottle & Food Warmer each time before use and only use it if the appliance and power cord are intact. If the supply cord is damaged, it must be replaced by the manufacturer, its service agent or similarly qualified persons in order to avoid a hazard.
21. This appliance must not be immersed in water or washed in a dishwasher.
22. Never place the base of the device in the microwave.
23. Always keep the instruction manual in a safe place.

Outside

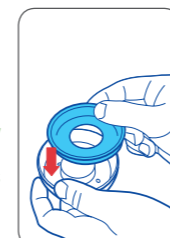
9 Easy Start™ Anti-Colic

Instructions for use:

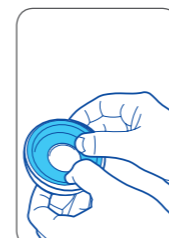
- Clean before first and each subsequent use.
- Before first use separate all 6 parts and place them in boiling water for 5 minutes. This is to ensure hygiene.
- Inspect all individual bottle parts before each use and pull the feeding teat in all directions. Throw away at the first signs of damage or weakness.
- To ensure proper cleaning/sterilising all bottle parts MUST be disassembled.
- Cleaning/sterilising while assembled can damage the bottle.
- Dishwasher safe on top dishwasher rack (max. 65° C / 149 F) but food colourings may discolour components.
- Do not use abrasive cleaning agents. Only soft bristle brushes or soft sponges should be used. Hard scourers may scratch the plastic.
- Sterilising using one of the following methods: steam sterilising (electric or microwave according to manufacturer's instructions), boiling in water for at least 5 minutes or immersing in a liquid sterilising solution.
- Do not leave items standing in any cleaning solution for longer than recommended - this could negatively affect the product function.
- The bottle is made of polypropylene which is hygienic, easy to clean and relatively soft. Avoid any heavy pressure on it, as this could affect the function.
- Do not use pin or sharp object to enlarge feeding hole of teat.
- When first used and sometimes during use, the ventilation slit (in the raised bubble on the underside of the teat base) can stick together. This will prevent air from entering the bottle during feeding and as a result, cause the teat to collapse. Slowly brush over the bubble (ventilation) a few times with your thumb or fingers to re-open the slit.
- Ensure valve is assembled correctly and the base of the bottle is firmly attached prior to filling bottle with liquid (see figure 1, 2 & 3).
- Do not let babies self-feed.
- Store teats and valves in a dry sealed container.
- Do not leave single bottle parts in direct sunlight or heat.
- Always use only MAM Teats with the MAM Bottles.
- Use sugar free food or liquids only.
- To avoid injury, do not let baby walk with bottle.
- Do not put your baby to bed with bottle. Prolonged contact with liquids may cause severe tooth decay.
- Bottle teat fits all MAM Bottles and the Trainer+.

HEATING instructions:

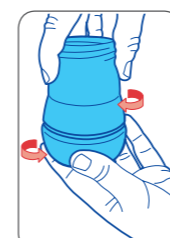
- NEVER pour boiling water into the bottle.
- Place in a bottle warmer, under hot running water or in a container of heated water.
- NEVER heat or cool a sealed bottle. Remove the protective cap and teat (with screw ring) before heating, especially before bottle warmer and microwave heating. Do not overheat as this may damage the bottle.
- Take extra care when heating in the microwave.



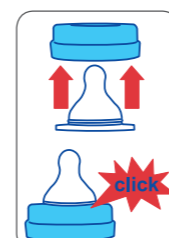
1 Place silicone valve into bottom ring.



2 Press down on raised perimeter of silicone valve.



3 Screw assembled base onto bottom of bottle in slow steady manner.



4 Insert teat into top of bottle screw ring until you hear a "click".

10. Stir thoroughly after heating to evenly distribute heat. Allow the standing time recommended by the microwave manufacturer. Test the temperature before serving.
- Wrap cloth or towel around bottom of bottle and shake to absorb any excess water after warming in a bottle warmer, under hot running or in heated water.
- After warming the bottle in a bottle warmer, under hot running or in heated water it is recommended to tighten the bottom of the bottle.
- Do not place bottle in heated oven.

For your child's safety and health WARNING!

- Always use this product with adult supervision.
- Never use feeding teats as a soother.
- Continuous and prolonged sucking of fluids will cause tooth decay.
- Always check food temperature before feeding.
- Keep all components not in use out of the reach of children.

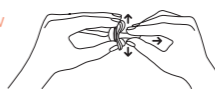
Start

Instructions for use:

- Before first use boil in water for 5 minutes. Allow to stand for a further 5 minutes before giving it to the baby.
- During cleaning a small amount of water may enter the teat. This can be expelled by squeezing the teat. This is to ensure hygiene.
- Clean before each use.
- Do not use aggressive cleaning agents.
- Never dip the teat in sweet substances or medication. This can cause tooth decay.
- To ensure safety and hygiene replace the soother every 1–2 months.
- Do not worry if the soother becomes lodged in the mouth. It can not be swallowed and is designed to cope with such an event. Remove as gently as possible.
- MAM recommends giving up soother usage at 3 years of age.

For your child's safety WARNING!

- Inspect carefully before each use. Pull the soother in all directions. Throw away at the first signs of damage or weakness.
- Only use dedicated soother holders tested to EN 12586. Never attach other ribbons or cords to a soother, your child may be strangled by them.
- Do not leave a soother in direct sunlight or near a source of heat or leave in sterilising solution for longer than recommended, as this may weaken the teat.



XXXXXXX (Company's name)
XXXXXXX (address, incl. street or post box and postal code)
XXXXXXX (website)
XXXX (telephone number)

xxxxxxxxxx

MAM

mambaby.com



Content

1. General sterilising instruction
 - 1.1. Using the Electric Steriliser
 - 1.2. Using the Microwave Steriliser
2. Bottle & Food Warmer instruction
3. Cleaning and maintaining the appliance
4. Environment/Disposal
5. Warranty
6. Repair notes
7. Technical data
8. Safety notes
9. MAM Easy Start
10. MAM Start

Electric Steriliser



Express Bottle Warmer



Electric Steriliser & Express Bottle Warmer

2 Electric Steriliser & Express Bottle Warmer

Please read all instructions carefully before using the MAM Electric Steriliser & Express Bottle Warmer for the first time. Keep these instructions for future reference. MAM Electric Steriliser & Express Bottle Warmer allows you to warm, defrost and sterilise all MAM and common Bottles and Milk Storages, as well as baby food safely and quickly.

Interface display guide



1 General sterilising instructions

Assembling of the Electric & Microwave Steriliser

Suitable for sterilising bottles, soothers and cup components. Before putting the items in the Steriliser, carefully wash all items (soothers, bottles etc.) in mild soapy water and rinse with clean water. Arrange the parts into the baskets evenly by ensuring that the steam flow is not blocked. Do not use the device for metal or electronic parts. Always use the correct quantity of water. Using too much or too little water can result in incomplete sterilising function and can damage the device and the microwave. TAKE CARE when handling recently disinfected items as they may still be hot. Wash your hands before touching disinfected items. CAUTION! Only place items in the Steriliser that are suitable for sterilising. Do not disinfect items that are filled with liquid: e.g. a teether containing cooling fluid.

SCALDING HAZARD: When opening the Steriliser after use, hot water vapour can escape and the remaining water may be very hot. Use sterilised tongs to remove and assemble the parts. Sterilised products kept in unopened Steriliser stay disinfected for up to 48 hours. To achieve the best possible sterilising and warming efficiency, do not operate other powerful electrical items at the same time on the same socket or circuit.

In order to achieve a sufficient disinfection effect up to 24h, the number of products sterilised together must not exceed the maximum numbers mentioned below:

	Easy Start 130ml	Easy Start 160ml	Easy Start 260ml	Easy Start 320ml	Trainer+ 220ml	Easy Active 270ml	Easy Active 330ml	Feel Good 160ml	Feel Good 260ml
number of bottles	6	6	4	4	6	6	5	4	4
number of pacifiers	3	3	3	3	3	3	3	3	3

3 Achieve a disinfection effect up to 48h, the maximum number of products sterilised together shall not exceed:

	Easy Start 130ml	Easy Start 160ml	Easy Start 260ml	Easy Start 320ml	Trainer+ 220ml	Easy Active 270ml	Easy Active 330ml	Feel Good 160ml	Feel Good 260ml
number of bottles	4	4	3	3	6	5	4	3	3
number of pacifiers	7	5	10	8	5	5	10	5	5

1.1. Using the Electric Steriliser



Fig. 1

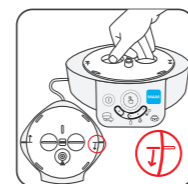


Fig. 2

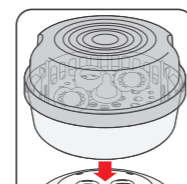


Fig. 3



Fig. 4

- 1.) Correct assembly of the Electric Steriliser is illustrated at the beginning of Section 1.
- 2.) Check that the sealing ring is pressed down firmly in its place, this never needs to be removed.
- 3.) Pour 200ml/7 fl oz tap water directly into the Base (Fig. 1).
- 4.) Fix the Steriliser Base Cover onto the Base using the grooves to "fit and twist" the cover (Fig. 2).
- 5.) Place the disassembled bottle and components in the upper and lower Baskets of the Steriliser.
- 6.) Close the Steriliser. The Steriliser Lid must "click" into place.
- 7.) Place the Steriliser on the Base Cover (Fig. 3).
- 8.) Insert the plug into the wall socket. Place it on a flat, stable surface.
- 9.) Switch the device ON (1) (Fig. 4). The light on the sterilising programme will appear, along with a short beep.
- 10.) Press the programme selection button (5) for 2 seconds to start the sterilising programme (Fig. 8). A long beep is heard and the light flashes constantly while the programme is running.
- 11.) The programme will run for 7 minutes and will automatically stop afterwards with 3 long beeps. Light stops flashing.
- 12.) Cooling down period starts: all 4 LEDs are lit. Allow the Steriliser to cool before removing the lid. Cooling period will automatically stop after 4 minutes along with 3 long beeps.
- 13.) Press OFF (1) to turn the device off. Pour out any remaining water from the Base and dry with a soft cloth. The programme can be interrupted by pressing the programme selection button (5). If programme is interrupted – please restart the entire process.

1.2. Using the Microwave Steriliser

- 1.) Correct assembly of the Microwave Steriliser is illustrated at the beginning of Section 1.
- 2.) Open the latch on the Microwave Steriliser and remove the Steriliser Lid.
- 3.) Remove the Steriliser Upper and Lower Baskets as necessary.
- 4.) Close the blue Steriliser Valve on the bottom of the Steriliser Bowl.
- 5.) Pour 200 ml tap water into the Steriliser Bowl. Place the disassembled bottles and components in the upper and lower Baskets of the Steriliser.
- 6.) Close the Steriliser. The Steriliser Lid must "click" into place. Place the Steriliser in the microwave.

The Steriliser works with all commercially available microwave devices. There must be some space between the microwave and Steriliser. Using a microwave that is too small can damage the steriliser and the microwave. Never place in the microwave without water. Do not use bleach. If using a combination microwave oven, ensure that the Microwave Steriliser is not exposed to the heat of the grill because this could damage steriliser, products and microwave.

inside

- 8.) Sterilising times correspond to the microwave's wattage (Fig. 5).
- 9.) Allow the Steriliser to cool before removing from the microwave. Recommended cooling time: minimum of 3 minutes with the microwave door open.
- 10.) For immediate use of the products any leftover water in the products can be removed by using the draining function in the lid. There are drainage grooves on the inside of the Steriliser Lid.
- 11.) Items can be placed inside the upturned Steriliser Lid individually or with in the Steriliser Baskets.

Power	Time	Cooling time
650 – 1000 W:	11 min	3 min
1050 – 1800 W:	6 min	3 min
1850 W:	5 min	3 min

Fig. 5

2. Bottle & Food Warmer instruction

Assembling the Bottle & Food Warmer



Fig. 6



Fig. 7

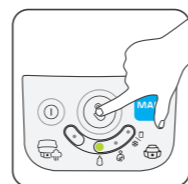
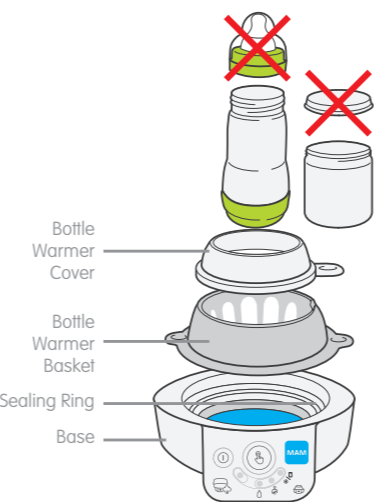


Fig. 8



Fig. 9



- 1.) Correct assembly of the Bottle & Food Warmer is illustrated at the beginning of Section 2.
- 2.) Use the **Bottle & Food Warmer chart** (Fig. 10) or the **Gentle Warming Chart** (Fig. 11) to determine how much water you need. Pour the correct quantity of water into the base (Fig. 6). You can use the MAM Bottle Cap as a measure.

Bottle & Food Warmer Chart (Fig. 10)

Please note: This chart provides you with approximate values for warming liquid & food. The time required for the food to reach the right temperature varies according to the container you are using, how much food you are warming and the temperature of the food before warming. Make sure you use the correct quantity of water. With a little practice, you will quickly learn which settings will give you the ideal food temperature. The programme automatically stops at the end of the heating cycle.

Fig. 10

Programme	Container	Volume	Initial temperature	Water quantity approx.	app. Time
Express Warming	Plastic Bottle	130ml	Room temperature	35ml	Minimum of 2.30 min.
			Refrigerator temperature	45ml	
		160ml	Room temperature	35ml	
			Refrigerator temperature	45ml	
		260ml	Room temperature	45ml	
			Refrigerator temperature	75ml	
Defrosting and Food Warming	Glass Bottle	170ml	Room temperature	15ml	Minimum of 1.50 min.
		260ml	Room temperature	20ml	
			Refrigerator temperature	15ml	
	Milk Storage	60ml	Freezer temperature	50ml	Minimum of 10.10 min.
		90ml	Freezer temperature	65ml	
		120ml	Freezer temperature	75ml	
Baby Food	Baby Food	190g	Room temperature	40ml	Minimum of 9.30 min.
		250g	Room temperature	40ml	
			Refrigerator temperature	60ml	

Gentle Warming Chart (Fig.11) Please note: This chart provides you with approximate values for warming breast milk. The time required for the breast milk to reach the right temperature varies according to how much breast milk you are warming and the temperature of the breast milk before warming. Make sure you use the correct quantity of water and the Easy Start Bottle. With a little practice, you will quickly learn which settings will give you the ideal temperature. The gentle warming process helps to preserve nutrients and maintain the optimal integrity of breast milk. For handling volumes below 140 ml the programme has to be stopped manually. If you want to warm 150 ml or more, the programme will stop automatically after one hour. Always check the temperature of the milk before feeding your baby.

Fig. 11

Programme	Container	Volume	Initial temperature	Water quantity approximately	manual turn off time	waiting time after turn off
Gentle warming	Easy Start	40 ml	Refrigerator temperature	200 ml	2 min	15 min
		50-60 ml		200 ml	2,5 min	15 min
		80-100 ml		200 ml	4 min	15 min
		120 ml		200 ml	6 min	15 min
		140 ml		200 ml	7,5 min	15 min

- 3.) Place the Bottle Warmer Basket and Bottle Warmer Cover on the Base.
- 4.) Remove the teat/cover/lid from the bottle, container, then place the container in the Bottle Warmer Basket (Note: To avoid damaging bottles or containers, always use the Bottle Warmer Basket and Cover for bottle & food warming). Insert the plug into the wall socket.
- 5.) Press ON (1) to switch on the device (Fig. 7). The light on the sterilising programme will appear, along with a short beep.

Now press the selection button (5) to move from sterilising to the bottle warmer programme (Fig. 8). Select the desired programme by briefly pressing programme selection button (5) until the light on the programme you need appears:

	Express Bottle Warming: Quick warming of all bottles up to drinking temperature.
	Gentle Warming: for breast milk
	Defrosting and Food Warming: frozen milk can be defrosted and warmed up. Baby food in containers can also be warmed up.

- 7.) Press the selection button (Fig. 8) for about 2 seconds to start the programme. A long beep is heard and the light flashes while programme is running. Programme can be interrupted by pressing the selection button (5).
- 8.) The programme automatically stops at the end of the heating cycle along with 2 long beeps. The light stops flashing and all 3 LEDs on the selected warmer programmes are lit.
- 9.) Food/milk in the Baby Food Warmer can get extremely hot! If warming less than stated in our instructions please be aware that it can be very warm. ALWAYS test the temperature of the food, before feeding it to baby. Stir the contents of the food with a spoon so that the heat spreads more evenly and quickly. If the food is not warm enough, add a little more water to the Base the next time you heat up food. If the food is too hot, let it cool down a little and use a little less water next time.
- 10.) All 3 warmer programmes have an integrated "keep warm" function. This automatically starts at the end of the heating cycle or after having turned off the programme manually (e.g., gentle warming of breast milk). When using the "keep warm" function, leave the Bottle Warmer Basket and Bottle Warmer Cover in place. "Keep warm" stops after 45 minutes along with 3 long beeps. Feed warmed breast milk instantly. Immediately dispose of any leftovers and do not reheat. Breast milk may be warmed up approx. 15-20 minutes before feeding.
- 11.) Press OFF (1) to turn off the device. Allow the device to cool before cleaning. Pour away any remaining water from the reservoir in the base and dry with a soft cloth (Fig. 9).

3. Cleaning & maintaining the appliance

Never place it in a dishwasher. Always unplug the appliance from the mains before cleaning & descaling. Do not clean or descale the appliance when it is hot. Do not use strong or abrasive cleaning or scouring agents, as these could attack the appliance's surface. After every use, unplug the appliance and wipe it with a damp cloth to avoid any build up of limescale. **Caution:** during cleaning and maintenance, the sealing ring may become loose or separated from the electric device. Check to ensure that the ring is correctly seated. If necessary, press it firmly into place. The wider part of the ring should be outside and the thicker part inside the base. **As shown on the sticker on the electric device, please descale the base at regular intervals.** Use household vinegar or a commercially available decalcifying agent for this purpose according to the manufacturers instructions. If the appliance ever needs repairing, under no circumstances attempt to open it. Instead, contact the address shown in these instructions. The appliance must never be immersed in water.

4. Environment/Disposal Registration number: XXXX

Do not throw away the appliance with the normal household waste at the end of its life, but hand it in at an official collection point for recycling. By doing this, you help to preserve the environment. Please contact your local authority for further details of your nearest collection point for WEEE.