

MAM Premies: Perfected in cooperation with clinical experts.

Specially designed for the needs of premature babies.

7 years of intensive research and development have gone into MAM Premies 1 and 2. The soothers for premature babies have been perfected together with experts such as dentists, paediatricians, paediatric nurses, speech therapists, engineers and designers. The result is a **one-piece construction made of 100 % silicone**, which meets the special requirements for everyday use in hospitals. The MAM Premies are available in 2 sizes. The MAM Premies 1 & 2 have been developed for premature babies weighing less than 1,000 g to 1,500 g. The MAM Comfort completes the MAM Premie range and is designed for babies of 1,400g and above. The MAM Comfort can be taken home by parents.

Clinical experts recognise the positive features:

MAM Premies can be easily held in the mouth due to their low weight, and so it is not necessary to repeatedly offer them to the baby.

The **small shield design** leaves more space for breathing masks and other medical devices (Fig. 1). The **low weight and small size** mean that the lip and tongue muscles are not overworked (Fig. 2).



Fig. 1

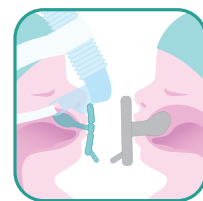


Fig. 2

DEVELOPED WITH MEDICAL EXPERTS

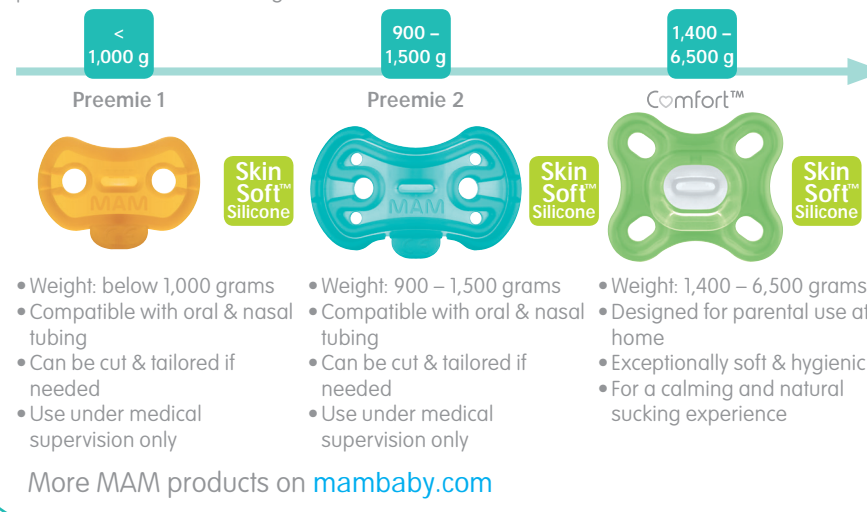
Teamwork with medical experts for maximum safety

Right from the beginning, MAM products are developed in cooperation with medical experts and research institutes such as ICMRS, paediatricians, child development experts, dentists and midwives. Only after approval by medical experts is a MAM innovation ready for baby life.



MAM Premies & MAM Comfort™

Because every baby is special: MAM has developed a soother line especially for the needs of premature and low-birth-weight babies.



More MAM products on mambaby.com

Patent number: xxxx
For more information please contact:
MAM (UK) LTD, PO BOX 271 TEDDINGTON, TW11 8FT
Tel: 0208 943 8880
Made in Austria
Please keep instructions for future use.

MAM Baby AG, Sihleggstrasse 15, 8832 Wollerau, Switzerland;
EC REP MAM Health & Innovation GmbH, GZO-DLZ 2, Top 3, 7011 Siegendorf, Austria



GGA1F5AC003.AAA



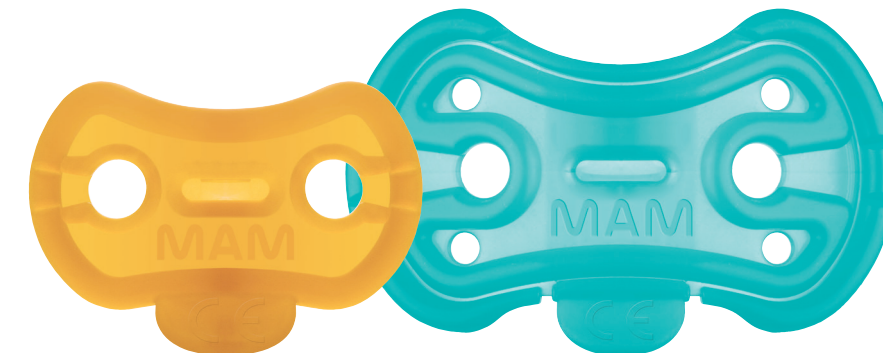
mambaby.com
Made in Europe



Preemie Size 1 & Size 2

- Soother for premature & low-birth-weight babies
- Ready to use – for distribution & use in hospitals only
- Lightweight one-piece construction
- Latex-free

*BPA/BPS free: All MAM products are made from materials free of BPA and BPS.



CE
Medical Device
Class 1



Instructions for use – MAM Premies size 1 & size 2

 Please read these instructions carefully before first use! These instructions only apply to MAM Premies size 1 and size 2. Separate instructions are available for the MAM Comfort.

1. The benefits of soothers

MAM Premie soothers are intended to be used for premature babies up to a maximum body weight of 1,500 g under medical supervision to compensate the typically present suck and swallow deficiency. Soothers help to satisfy the natural sucking urge of babies. Babies can benefit from the pain-relieving effect of soothers during medical interventions. Furthermore, soothers help with the switch from gavage feeding to breastfeeding or bottle feeding as it trains the oral musculature. The soother is one of the many preventive strategies against sudden infant death syndrome (SIDS).

2. When to use this product

The MAM Premies are intended for premature babies up to 1,500g under medical supervision.

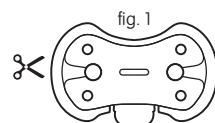
MAM Premie size 1 for babies with a weight below 1,000g

MAM Premie size 2 for babies with a weight between 900g and 1,500g

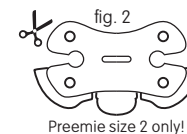
The soother is only intended for a premature baby in the respective weight range (see print on bag) and may only be used during hospital stay.

3. How to clean & use this product

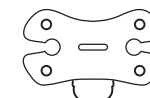
Germ-reduced through gamma irradiation and ready for initial use if package is not opened or damaged. If packaging is damaged, clean and autoclave before use. Allow to cool. Clean after each use. Wash with mild soapy water and then rinse with clear water. Do not use aggressive cleaning agents. Autoclavable up to 134°C/273°F for a maximum of 18 minutes (max. 20 times). Allow to stand for at least 5 minutes before giving it to baby. After cleaning or autoclaving expel remaining water by squeezing the teat with sterilised teat tongs. Replace the soother at least every month. Only use for one baby. Sizes and weights are general guidelines. Individual adaption and usage with oral & nasal tubing: The product can be tailored by cutting with scissors or a scalpel (see fig. 1 and fig. 2). Dispose of all small parts immediately after cutting to prevent choking hazards.



Minimum version
Premie size 1



Premie size 2 only!



Minimum version
Premie size 2

4. When this product may not be used

The MAM Premies size 1 & 2 may only be used during hospital stay under medical supervision. Therefore, parents must NEVER be allowed to take the product home.

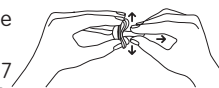
MAM Premie size 1 must not be used for babies above 1,000g.

MAM Premie size 2 must not be used for babies below 900g or above 1,500g.

The size of the soother is embossed on the teat.

5. For the child's safety – WARNING!

WARNING – This Soother Is For A Premature Infant. Use Of This Product Beyond The Recommended Age For The Baby Could Pose A Choking Risk. Do Not Use This Product When the Infant Reaches the Developmental Age of 27 Weeks (<1,000 g) in case of Premie 1 or 30 weeks (<1,500 g) in case of Premie 2. Please Consult With Your Doctor.




Inspect carefully before each use. Pull the soother in all directions. Throw away at the first signs of damage or weakness. Do not leave the soother in direct sunlight or near a source of heat (except during cleaning) or leave in cleaning solution for longer than recommended, as this may weaken the teat. To avoid danger of suffocation, keep the plastic bag away from babies and children. Do not use the bag in cribs, beds, carriages or playpens. The bag is not a toy. Do not tie soother around child's neck as it presents a strangulation danger. The product does not meet the safety standards which are applied to normal soothers, namely EN 1400 and 16 CFR 1511. It poses a choking hazard. Therefore, it must only be used under medical supervision. Parents must never be allowed to take the product home.

6. Composition of this product

The MAM Premies are made of 100% odourless silicone.

7. How to store and dispose of this product

 5°C/41°F - 30°C/86°F - 86°F/+86°F. The soother has to be stored at room temperature between +5°C and +30°C / +41°F and +86°F.



Protect from direct sunlight.



Expiry date is on the packaging. Replace the soother at least every month. Dispose of this product in general hospital waste.



Lot number is on the packaging.

Date of information: 12/2020 - V.1.1



Instructions for use – MAM Preemies size 1 & size 2

 Please read these instructions carefully before first use! These instructions only apply to MAM Preemies size 1 and size 2. Separate instructions are available for the MAM Comfort.

1. The benefits of soothers

MAM Premie soothers are intended to be used for premature babies up to a maximum body weight of 1,500 g under medical supervision to compensate the typically present suck and swallow deficiency. Soothers help to satisfy the natural sucking urge of babies. Babies can benefit from the pain-relieving effect of soothers during medical interventions. Furthermore, soothers help with the switch from gavage feeding to breastfeeding or bottle feeding as it trains the oral musculature. The soother is one of the many preventive strategies against sudden infant death syndrome (SIDS).

2. When to use this product

The MAM Preemies are intended for premature babies up to 1,500g under medical supervision.

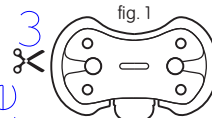
MAM Premie size 1 for babies with a weight below 1,000g

MAM Premie size 2 for babies with a weight between 900g and 1,500g

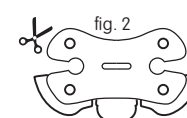
The soother is only intended for a premature baby in the respective weight range (see print on bag) and may only be used during hospital stay.

3. How to clean & use this product

Germ-reduced through gamma irradiation and ready for initial use if package is not opened or damaged. If packaging is damaged, clean and autoclave before use. Allow to cool. Clean after each use. Wash with mild soapy water and then rinse with clear water. Do not use aggressive cleaning agents. Autoclavable up to 134°C/273°F for a maximum of 18 minutes (max. 20 times). Allow to stand for at least 5 minutes before giving it to baby. After cleaning or autoclaving expel remaining water by squeezing the teat with sterilised teat tongs. Replace the soother at least every month. Only use for one baby. Sizes and weights are general guidelines. Individual adaption and usage with oral & nasal tubing: The product can be tailored by cutting with scissors or a scalpel (see fig. 1 and fig. 2). Dispose of all small parts immediately after cutting to prevent choking hazards.



Minimum version
Premie size 1



Minimum version
Premie size 2

4. When this product may not be used

The MAM Preemies size 1 & 2 may only be used during hospital stay under medical supervision. Therefore, parents must NEVER be allowed to take the product home.

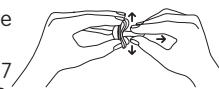
MAM Premie size 1 must not be used for babies above 1,000g.

MAM Premie size 2 must not be used for babies below 900g or above 1,500g.

The size of the soother is embossed on the teat.

5. For the child's safety – WARNING!

WARNING – This Soother Is For A Premature Infant. Use Of This Product Beyond The Recommended Age For The Baby Could Pose A Choking Risk. Do Not Use This Product When the Infant Reaches the Developmental Age of 27 Weeks (<1,000 g) in case of Premie 1 or 30 weeks (<1,500 g) in case of Premie 2. Please Consult With Your Doctor.

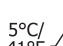


Inspect carefully before each use. Pull the soother in all directions. Throw away at the first signs of damage or weakness. Do not leave the soother in direct sunlight or near a source of heat (except during cleaning) or leave in cleaning solution for longer than recommended, as this may weaken the teat. To avoid danger of suffocation, keep the plastic bag away from babies and children. Do not use the bag in cribs, beds, carriages or playpens. The bag is not a toy. Do not tie soother around child's neck as it presents a strangulation danger. The product does not meet the safety standards which are applied to normal soothers, namely EN 1400 and 16 CFR 1511. It poses a choking hazard. Therefore, it must only be used under medical supervision. Parents must never be allowed to take the product home.

6. Composition of this product

The MAM Preemies are made of 100% odourless silicone.

4 How to store and dispose of this product

 The soother has to be stored at room temperature between +5°C and +30°C / +41°F and +86°F.



Protect from direct sunlight.



Expiry date is on the packaging. Replace the soother at least every month. Dispose of this product in general hospital waste.



Lot number is on the packaging.

Date of information: 12/2020 - V.1.1

