



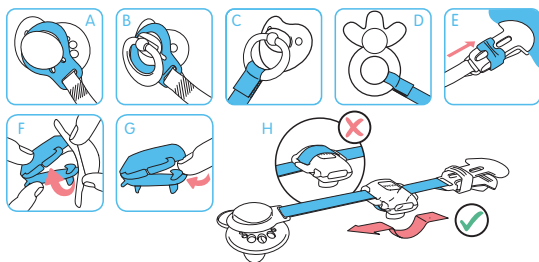
Clip & Cover

Online Shop

EN

CLIP & COVER Instructions for use.

When used with a MAM or other button soother, press the transparent ring over the button of the soother (Diagram A). When used with a soother with handle, put the transparent ring over the whole handle of the soother (Diagram B), or attach the ribbon directly to the soother handle, using the hook & loop fastener (Diagram C). The hook & loop fastener securely holds not only soothers but also teethingers, small toys and much more (Diagram D). The clip fastener is opened by moving the slider towards the leash and closed by clicking the slider towards the rounded end (Diagram E). The clip should only be attached to garments. The clip fastener should always be **stored and cleaned in the open position** to avoid the clip spring losing its strength. Do not store in the closed position. Regularly clean the clip with warm water and mild cleaning agent. Rinse thoroughly. **DO NOT BOIL**, steam or microwave sterilise. Do not use solvents or abrasive cleaning agents as these could damage the product. Clean the teat cover in the same way as the clip or clean in the dishwasher. The teat cover can also be sterilised by boiling (5 min.), or in a microwave steriliser or steam steriliser. Remove the teat cover from the leash before sterilising or dishwashing. Open the teat cover by twisting it when clipped onto the soother teat (Diagram F). When not clipped onto the soother teat, open it by pushing your finger inside the opening (Diagram G). To keep the teat cover at hand, string it onto the leash. String it in a way that the MAM logo is not covered by the leash. (Diagram H). Keep the teat cover always closed when in use.



For your child's safety

WARNING!

Before each use check carefully. Throw away at the first sign of damage or weakness.

Never lengthen the soother holder!

Never attach to cords, ribbons, laces or loose parts of clothing. The child may be strangled.

The clip should not be used when the baby is sleeping or in bed, crib or cot.

Ensure both ends of the clip are fastened before leaving your child unattended.

The clip should not be used as a teether or toy.

Keep the removable teat protector away from children to avoid suffocation.