



Storage Solution

Online Shop

EN

Storage Solution

Instructions for use:

- Check all components before each use. Throw away at the first signs of damage or weakness.
- Product is suitable for food contact.
- Use a pencil for the washable labelling area. Do not use permanent markers.

Cleaning & sterilising:

- Before first use separate all parts and place them in boiling water for 5 minutes. This is to ensure hygiene.
- Dishwasher safe on top dishwasher rack (65°C / 149 F) but food colourings may discolour components.
- Do not use abrasive cleaning agents. Only soft bristle brushes or soft sponges should be used. Rough/hard scourers can scratch the plastic.
- Sterilise using one of the following methods: steam sterilising (electric or microwave according to manufacturers instructions), boiling in water for at least 10 minutes or liquid sterilising solution.
- When using the MAM Electric Steriliser and Express Bottle Warmer or the MAM Microwave Steam Steriliser for sterilising the storage solution use only one tray.
- Stackable when dry after cleaning/sterilising.

Usage with breast milk:

- Do not defrost breast milk in the microwave, as this will reduce its nutritional value.
- It is recommended that breast milk is frozen in small portions of 40-120 ml/ 1.5-4 UK fl oz.
- Defrost frozen milk over night in the fridge or at room temperature.
- To warm the milk place in a bath of hot water or a bottle warmer. To warm to body temperature, running water can also be used. Start with cold running water and gradually increase the temperature until the milk is warm.
- Under no circumstances should breast milk be refrozen. Pour warmed unused milk away.
- Never mix newly expressed breast milk with frozen milk.
- When transporting breast milk, it is important that the cooling chain is not interrupted.

Warming baby food (do not overheat):

- To warm baby food, we recommend placing it in a bath of hot water or a bottle warmer.
- Remove the lid of the Storage Solution before placing the cup in a bath of hot water or a bottle warmer.
- To evenly distribute heat stir the baby food thoroughly after heating and allow time to cool.

Usage in combination with the MAM Manual Breast Pump & Storage Solution:

- 1) Remove the Easy Start Anti-Colic base ventilation and screw the Storage Solution on in its place. This unit can now be screwed onto the pump. All sizes of Easy Start bottle can be used in this way (Figure 1).
- 2) Bring the pump to the breast and express. Please refer to the MAM Manual Breast Pump instructions for use (Figure 2).
- 3) Unscrew the Storage Solution and close securely with the lid (Figure 3). To save space you can stack them (Figure 4).
- 4) To label with expression date and time, use the purpose designed two-part area on the Storage Solution. A pencil is best used.
- 5) Store for the recommended time periods.

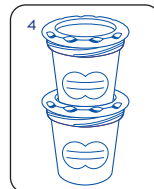
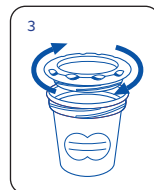
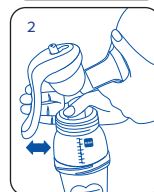
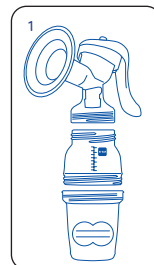
Fridge (4°C or lower) up to 8 days

Never place breastmilk in the door compartment of your fridge.

Freezer (-18°C or lower) up to 6 months

Ice compartment of fridge for up to 2 weeks.

- 6) Use the longest stored breast milk first.



For your child's safety and health WARNING!

- Always use this product with adult supervision.
- Keep all components not in use out of the reach of children.